



NIKE TEAM SPORTS 2013/2014

WOMEN'S BASKETBALL

JUST
DO
IT.



NIKETEAM.COM



WOMEN'S BASKETBALL

- 2 STOCK
- 7 DIGITAL
- 17 CUSTOM
- 23 CUSTOM ELITE
- 27 FOOTWEAR
- 28 EQUIPMENT
- 29 ACCESSORIES



436641 | HYPER ELITE JERSEY

\$45.00

SIZES: S, M, L, XL, 2XL, 3XL

OFFER DATE: 09/01/11
END DATE: 01/01/14

System of dress game uniform. Double knit fabrication. V-neck design. Contrast printed silicone striping down side panels. Contrast neck band. Nike Team Sports jock tag at lower left hem. Body width: 19.25", Body length: 29.25" (size medium).

Part of Stock Embellishment Program.

FABRIC: Body: 100% recycled polyester. Collar: 92% polyester/8% spandex.

012 Black/White	104 White/Cardinal	106 White/Black
107 White/Navy	108 White/Royal	109 White/Scarlet
110 White/Purple	111 White/Dark Green	115 White/Dark Maroon
342 Dark Green/White	420 Navy/White	494 Royal/White
546 Purple/White	612 Cardinal/White	658 Scarlet/White
670 Dark Maroon/White		



436642 | HYPER ELITE SHORT

\$55.00

SIZES: S, M, L, XL, 2XL, 3XL

OFFER DATE: 09/01/11
END DATE: 01/01/14

System of dress game short. Woven fabrication. 2" gripper elastic waistband with draw-cord for adjustability. Contrast printed stripe on side panels with laser perforation for ultimate ventilation. Swoosh design trademark at left hip. Hip width: 23.25" (size medium), Inseam length: 10.25" (all sizes).

FABRIC: Body: 100% recycled polyester.

012 Black/White/(White)	104 White/Cardinal/(Cardinal)	106 White/Black/(Black)
107 White/Navy/(Navy)	108 White/Royal/(Royal)	109 White/Scarlet/(Scarlet)
110 White/Purple/(Purple)	111 White/Dark Green/(Dark Green)	115 White/Dark Maroon/(Dark Maroon)
342 Dark Green/White/(White)	420 Navy/White/(White)	494 Royal/White/(White)
546 Purple/White/(White)	612 Cardinal/White/(White)	658 Scarlet/White/(White)
670 Dark Maroon/White/(White)		



554700

CONDITION GAME JERSEY

\$45.00

SIZES: S, M, L, XL, 2XL, 3XL

OFFER DATE: 09/01/13
END DATE: 01/01/16

A sleek combination of flat back mesh helps keep this sleeveless game jersey lightweight and breathable while on the court. A tailored fit with a v-neck design for that feminine yet athletic look. Contrast design detail on underarm side panels and neck band give this jersey a great look on the court. Nike Team Sports jock tag at lower left hem. Body width: 19.25", Body length: 29.25" (size medium).

Part of Stock Embellishment Program.

FABRIC: 100% polyester.

012 Black/White	104 White/Cardinal	106 White/Black
107 White/Navy	108 White/Royal	109 White/Scarlet
110 White/Purple	111 White/Dark Green	115 White/Dark Maroon
342 Dark Green/White	420 Navy/White	494 Royal/White
546 Purple/White	612 Cardinal/White	658 Scarlet/White
670 Dark Maroon/White		

NEW DRI-FIT



554701

CONDITION GAME SHORT

\$45.00

SIZES: S, M, L, XL, 2XL, 3XL

OFFER DATE: 09/01/13
END DATE: 01/01/16

Combination of flat-back mesh help provide the athlete with a breathable and comfortable game short under any court conditions. Gripper elastic waistband with draw cord allows for adjustability. Contrast design detail on side panels of the short. Embroidered Swoosh design trademark at upper left hip. Hip width: 25" (size medium), Inseam length: 10.25" (all sizes).

FABRIC: 100% polyester.

012 Black/White/(White)	104 White/Cardinal/(Cardinal)	106 White/Black/(Black)
107 White/Navy/(Navy)	108 White/Royal/(Royal)	109 White/Scarlet/(Scarlet)
110 White/Purple/(Purple)	111 White/Dark Green/(Dark Green)	115 White/Dark Maroon/(Dark Maroon)
342 Dark Green/White/(White)	420 Navy/White/(White)	494 Royal/White/(White)
546 Purple/White/(White)	612 Cardinal/White/(White)	658 Scarlet/White/(White)
670 Dark Maroon/White/(White)		

NEW DRI-FIT



509171

FRONT COURT GAME JERSEY

\$35.00

SIZES: XS, S, M, L, XL, 2XL, 3XL

OFFER DATE: 09/01/12
END DATE: 01/01/15

System of dress game jersey. A combination of piqué and flat back mesh fabrication provides the athlete with a cool and comfortable fit for any level of competition. V-neck design. Contrast self taping down side panels. Contrast neck band. Nike Team Sports jock tag at lower left hem. Body width: 19.25", Body length: 29.25" (size medium).

Part of Stock Embellishment Program.

Part of Response Program.

FABRIC: 100% polyester.

012 Black/White	104 White/Cardinal	106 White/Black
107 White/Navy	108 White/Royal	109 White/Scarlet
110 White/Purple	111 White/Dark Green	115 White/Dark Maroon
342 Dark Green/White	420 Navy/White	494 Royal/White
546 Purple/White	612 Cardinal/White	658 Scarlet/White
670 Dark Maroon/White		

Youth #553516 / S-XL / \$30.00 / Body width: 16.75", Body length: 25.25" (size medium)



509172

FRONT COURT GAME SHORT

\$35.00

SIZES: XS, S, M, L, XL, 2XL, 3XL

OFFER DATE: 09/01/12
END DATE: 01/01/15

System of dress game short. A combination of piqué and flat back mesh fabrication provides the athlete with a cool and comfortable fit for any level of competition. Contrast self fabric tape detail provides a clean on court look. Gripper elastic waistband with drawcord for adjustability. Embroidered Swoosh design trademark at upper left hip. Hip width: 25" (size medium), Inseam length: 10.25" (all sizes).

Part of Response Program.

FABRIC: 100% polyester.

012 Black/White/(White)	104 White/Cardinal/(Cardinal)	106 White/Black/(Black)
107 White/Navy/(Navy)	108 White/Royal/(Royal)	109 White/Scarlet/(Scarlet)
110 White/Purple/(Purple)	111 White/Dark Green/(Dark Green)	115 White/Dark Maroon/(Dark Maroon)
342 Dark Green/White/(White)	420 Navy/White/(White)	494 Royal/White/(White)
546 Purple/White/(White)	612 Cardinal/White/(White)	658 Scarlet/White/(White)
670 Dark Maroon/White/(White)		

Youth #554703 / S-XL / \$30.00 / Hip width: 21.5", Inseam length: 9.25" (size medium)



554702 | VICTORY L/S SHIRT

\$60.00

SIZES: S, M, L, XL, 2XL, 3XL

OFFER DATE: 09/01/13
END DATE: 01/01/16

Get yourself ready in this Dri-FIT piqué long sleeve shoot around shirt. Quarter-zip design helping keep the athlete warm during pre-game preparation. Contrast center front zipper, contrast mesh under arm inset and contrast lower hem detail give this style a clean look on and off the court. Embroidered Swoosh design trademark at upper right chest. Nike Team Sports jock tag at lower left hem. Body width: 20.75", Body length: 28.5" (size medium).

FABRIC: 100% polyester.

010 Black/White/(White)	100 White/White/(Black)	342 Green/White/(White)
420 Navy/White/(White)	494 Royal/White/(White)	546 Purple/White/(White)
612 Cardinal/White/(White)	658 Scarlet/White/(White)	670 Dark Maroon/White/(White)

NEW

DRI-FIT



509176 | UP AND UNDER MESH TANK

\$30.00

SIZES: S, M, L, XL, 2XL, 3XL, LT, XLT, 2XLT, 3XLT

OFFER DATE: 09/01/12
END DATE: 07/01/15

Tricot warp knit mesh reversible racer-back tank with women's specific fit. Contrast color on side panels and upper shoulders. Nike Team Sports jock tag on lower left hem and embroidered Swoosh design trademark on reversed back yoke. Body width: 19.25", Body length: 26.5" (size medium). Tall body length: +2.375" (all sizes).

FABRIC: Body: Color: 100% nylon. White: 100% polyester.

012 Black/White/(Black)	342 Dark Green/White/(Dark Green)	420 Navy/White/(Navy)
494 Royal/White/(Royal)	546 Purple/White/(Purple)	610 Cardinal/White/(Cardinal)
658 Scarlet/White/(Scarlet)	670 Dark Maroon/White/(Dark Maroon)	



STOCK EMBELLISHMENT PROGRAM

FULL BLOCK font only



Embellishment Color Options:



Women's Basketball - 1 or 2 color

STYLE NUMBER	STYLE NAME	CATALOG PAGE #	LETTER HEIGHT	NUMBER HEIGHT FRONT/BACK	PRINT OPTIONS 1" EMBROIDERY OR PRINTED TEAM NAME	
436641	HYPER ELITE JERSEY	2	2½"	5"/8"	WILDCATS	
554700	LSU GAME JERSEY	3	2½"	5"/8"	10	10
509171	FRONT COURT GAME JERSEY	4	2½"	5"/8"		
553516	FRONT COURT GAME JERSEY – YOUTH	4	2"	4"/7"		

One-Color Screenprint – \$30

Two-Color Screenprint – \$40

436647 DQT RUTGERS GAME JERSEY

\$70.00*



SIZES: XS, S, M, L, XL, 2XL

OFFER DATE: AVAILABLE 365 DAYS/YEAR

*15% upcharge for 3XL, LT, XLT, 2XLT, 3XLT

Fully sublimated flat back mesh lightweight performance v-neck game jersey. Contrast team color name across center front chest and inset on side panel. Nike Team Sports jock tag at lower left hem. Body width: 19.25", Body length: 28.75" (size medium). Tall body length: +2.375" (all sizes). NFHS approved. **Exclusive order form required.**

FABRIC: 100% polyester.



436648 DQT RUTGERS GAME SHORT

\$65.00*



SIZES: XS, S, M, L, XL, 2XL

OFFER DATE: AVAILABLE 365 DAYS/YEAR

*15% upcharge for 3XL, LT, XLT, 2XLT, 3XLT

Fully sublimated lightweight performance game short. Drawcord waistband and contrast team color side panel inset with no side seam. Swoosh design trademark at left hip. Options: +2" and +4" additional length. Hip width: 25" (size medium), Inseam length: 10.25" (all sizes). Tall inseam length: +1" (all sizes). NFHS approved. **Exclusive order form required.**

FABRIC: 100% polyester.



350825 DQT UCONN GAME JERSEY

\$70.00*



SIZES: XS, S, M, L, XL, 2XL

OFFER DATE: AVAILABLE 365 DAYS/YEAR

*15% upcharge for 3XL, LT, XLT, 2XLT, 3XLT

END DATE: 01/01/14

Fully sublimated lightweight performance V-neck game jersey. Contrast team color name across center front chest and inset on side panel. Nike Team Sports jock tag at lower left hem. Body width: 19.25", Body length: 29.25" (size medium). Tall body length: +2.375" (all sizes). NFHS approved. **Exclusive order form required.**

FABRIC: 100% polyester.



350826 DQT UCONN GAME SHORT

\$65.00*



SIZES: XS, S, M, L, XL, 2XL

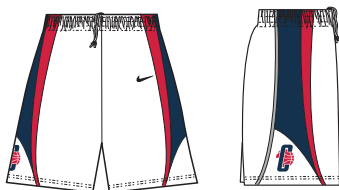
OFFER DATE: AVAILABLE 365 DAYS/YEAR

*15% upcharge for 3XL, LT, XLT, 2XLT, 3XLT

END DATE: 01/01/14

Fully sublimated lightweight performance game short. Drawcord waistband and contrast team color side panel inset with no side seam. Swoosh design trademark at left hip. Options: +2" and +4" additional length. Hip width: 25" (size medium), Inseam length: 10.25" (all sizes). Tall inseam length: +1.25" (all sizes). NFHS approved. **Exclusive order form required.**

FABRIC: 100% polyester.



554704 | UNIFIED GAME JERSEY

\$65.00*



SIZES: S, M, L, XL, 2XL

OFFER DATE: 09/01/13

*15% upcharge for 3XL, LT, XLT, 2XLT, 3XLT

END DATE: 01/01/16

Women's system of dress fully sublimated uniform with v-neck design and a tailored fit. A combination of piqué body fabric on the front of the jersey and an engineered mesh aerographic net design fabric on the back of the jersey make this an elevated jersey keeping it a lightweight and breathable game uniform. Options for contrast design around the collar on the neck band and side panels as well as upper shoulder strap. Nike Team Sports jock tag at lower left hem. Body width: 19.25", Body length: 29.25" (size medium). Tall body length: +2.375" (all sizes).

FABRIC: 100% polyester.

NEW

553511 | UNIFIED GAME SHORT

\$75.00*



SIZES: S, M, L, XL, 2XL

OFFER DATE: 09/01/13

*15% upcharge for 3XL, LT, XLT, 2XLT, 3XLT

END DATE: 01/01/16

Women's system of dress lightweight woven fabrication fully sublimated game short provides the athlete with ultimate breathability. 2" gripper elastic drawcord waist band for adjustability. Ability to contrast to team colors on the side panel and an option for one letter team customization on each side panel. Perforated side panels bring an extra lightweight element into this game short. Custom logo option on center front waistband. Swoosh design trademark at upper left hip. Hip width: 23.25" (size medium), Inseam length: 10.25" (all sizes). Tall inseam length: +1.25" (all sizes).

FABRIC: 100% polyester.

NEW



HYPER ELITE GAME JERSEY 2.0

See below*



SIZES: S, M, L, XL, 2XL
*15% upcharge for 3XL, LT, XLT, 2XLT, 3XLT

OFFER DATE: 09/01/11
END DATE: 01/01/14

Women's system of dress fully sublimated uniform with v-neck design and a tailored fit. A combination of piqué body fabric on the front of the jersey and an aerographic net design engineered mesh fabric on the back of the jersey make this an elevated breathable and lightweight game uniform. Contrast collar neck band and side panels. Nike Team Sports jock tag lower left hem. Body width: 19.25", Body length: 29.25" (size medium). Tall body length: +2.375" (all sizes).

FABRIC: Body: 100% polyester.

436643	Knock Out Design	\$60.00*
--------	------------------	----------



HYPER ELITE GAME SHORT 2.0

See below*



SIZES: S, M, L, XL, 2XL
*15% upcharge for 3XL, LT, XLT, 2XLT, 3XLT

OFFER DATE: 09/01/11
END DATE: 01/01/14

Women's system of dress lightweight woven fabrication fully sublimated game short. Laser perforated side panels elevate this short for ultimate breathability. 2" gripper elastic drawcord waist band for adjustability. Ability to contrast team colors on side panels and option for one or two letter team customization on upper right hip. Embroidered Swoosh design trademark at upper left hip. Hip width: 23.25" (size medium), Inseam length: 10.25" (all sizes). Tall inseam length: +1.25" (all sizes).

FABRIC: Body: 100% polyester.

436644	Knock Out Design	\$70.00*
--------	------------------	----------



PERIMETER GAME JERSEY

See below*



SIZES: S, M, L, XL, 2XL
*15% upcharge for 3XL, LT, XLT, 2XLT, 3XLT

OFFER DATE: 09/01/12
END DATE: 01/01/15

Women's system of dress fully sublimated uniform with v-neck design and a tailored fit. A combination of piqué body fabric on the front of the jersey and an aerographic net design engineered mesh fabric on the back of the jersey make this an elevated breathable and lightweight game uniform. Contrast collar neck band and side panels. Nike Team Sports jock tag lower left hem. Body width: 19.25", Body length: 29.25" (size medium). Tall body length: +2.375" (all sizes).

FABRIC: 100% polyester.

509173	Sublimated Jersey with Name and Number	\$60.00*
532629	Sublimated Jersey with Sublimated Lightweight Stretch Twill	\$120.00*
532630	Sublimated Jersey with One-Color Lightweight Stretch Twill	\$116.00*

DRI-FIT



PERIMETER GAME SHORT

See below*



SIZES: S, M, L, XL, 2XL
*15% upcharge for 3XL, LT, XLT, 2XLT, 3XLT

OFFER DATE: 09/01/12
END DATE: 01/01/15

Women's system of dress lightweight woven fabrication fully sublimated game short provides the athlete with ultimate breathability. 2" Gripper elastic drawcord waist band for adjustability. Ability to contrast team colors on side panels and option for one letter team customization on each side panel. Custom logo option on center front waistband. Embroidered Swoosh design trademark at upper left hip. Hip width: 23.25" (size medium), Inseam length: 10.25" (all sizes). Tall inseam length: +1.25" (all sizes).

FABRIC: 100% polyester.

509174	Sublimated Short with Letter	\$60.00*
544021	Sublimated Short with Sublimated Lightweight Stretch Twill	\$100.00*
544022	Sublimated Short with One-Color Lightweight Stretch Twill	\$96.00*

DRI-FIT



TEAM ID II GAME JERSEY

See below*



SIZES: S, M, L, XL, 2XL
*15% upcharge for 3XL, LT, XLT, 2XLT, 3XLT

OFFER DATE: 09/01/12
END DATE: 01/01/15

Lightweight performance game jersey. Unique printed design with multiple color and embellishment options. Flat-seam construction. Set-in side-panel. Nike Team Sports jock tag at lower left hem. Body width: 20.5", Body length: 29" (size medium). Tall body length: +2.375" (all sizes).

FABRIC: 100% polyester.

514744 Chapel Design \$45.00*

Youth #509431 / S-XL / \$40.00 / Body width: 17.5", Body length: 25" (size medium)



TEAM ID II GAME SHORT

See below*



SIZES: S, M, L, XL, 2XL
*15% upcharge for 3XL, LT, XLT, 2XLT, 3XLT

OFFER DATE: 09/01/12
END DATE: 01/01/15

Lightweight, fully sublimated short. Unique printed design on side panel. Drawcord waistband for custom fit and comfort. Contrast Swoosh design trademark left hip. Hip width: 23.25" (size medium), Inseam length: 10.25" (all sizes). Tall inseam length: +1.25" (all sizes).

FABRIC: 100% polyester.

514745 Chapel Design \$45.00*

Youth #509432 / S-XL / \$40.00 / Hip width: 20.5", Inseam length: 8" (size medium)



TEAM ID GAME JERSEY

See below*



SIZES: S, M, L, XL, 2XL
*15% upcharge for 3XL, LT, XLT, 2XLT, 3XLT

OFFER DATE: 09/01/07
END DATE: 01/01/14

Lightweight performance game jersey. Unique printed design with multiple color and embellishment options. Flat-seam construction. Set-in side-panel. Nike Team Sports jock tag at lower left hem. Body width: 20.5", Body length: 29" (size medium). Tall body length: +2" (all sizes). NFHS approved.

FABRIC: 100% polyester.

239299	Team Tradition	\$45.00*
239299	Fastbreak	\$45.00*
239299	Franchise	\$45.00*



TEAM ID GAME SHORT

See below*



SIZES: S, M, L, XL, 2XL
*15% upcharge for 3XL, LT, XLT, 2XLT, 3XLT

OFFER DATE: 09/01/07
END DATE: 01/01/14

Lightweight, fully sublimated short. Drawcord waistband for custom fit and comfort. Contrast Swoosh design trademark left hip. Hip width: 23" (size medium), Inseam length: 8.5" (all sizes). Tall inseam length: +2" (all sizes). NFHS approved.

FABRIC: 100% polyester.

239300	Team Tradition	\$45.00*
239300	Fastbreak	\$45.00*
239300	Franchise	\$45.00*



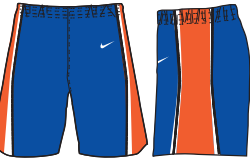
Team Tradition (NFHS)



Fastbreak (NFHS)



Franchise (NFHS)



WMNS RECRUIT MESH JERSEY

See below*



SIZES: XS, S, M, L, XL, 2XL
*15% upcharge for 3XL, LT, XLT, 2XLT, 3XLT

OFFER DATE: 09/01/10
END DATE: 01/01/14

Fully sublimated double knit mesh reversible jersey. V-neck design for feminine yet athletic look. Ability for team color customization. Nike Team Sports jock tag at lower left hem. Optional sublimated Swoosh design trademark at upper right chest. Body width: 20.5", Body length: 29.25" (size medium), Tall Body length: +2.375".

FABRIC: 100% polyester.

406386 Recruit \$70.00*

Youth #531466 / S-XL / \$65.00 / Body width: 17.5", Body length: 25" (size medium)

DRI-FIT



WMNS RECRUIT MESH SHORT

See below*



SIZES: S, M, L, XL, 2XL
*15% upcharge for 3XL, LT, XLT, 2XLT, 3XLT

OFFER DATE: 09/01/10
END DATE: 01/01/14

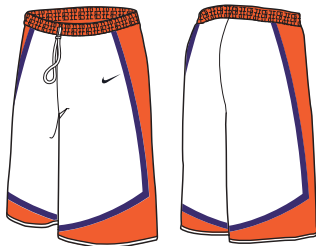
Fully sublimated reversible double knit mesh short. Ability for team color customization. Elastic waistband with drawcord for adjustability and comfort. Sublimated Swoosh design trademark at upper left hip. Hip width: 23" (size medium), Inseam length: 10.25" (all sizes), Tall Inseam length: +1.25".

FABRIC: 100% polyester.

406387 Recruit \$70.00*

Youth #531465 / S-XL / \$65.00 / Hip width: 20", Inseam length: 9.25" (size medium)

DRI-FIT



PINNACLE MESH 3.0 JERSEY

See below*



SIZES: S, M, L, XL, 2XL
*15% upcharge for 3XL, LT, XLT, 2XLT, 3XLT

OFFER DATE: 09/01/12
END DATE: 01/01/15

Pinnacle mesh provides the latest in single layer technology for optimal practice performance. Dri-FIT fabric reversible single-layer mesh jersey. Two fully sublimated design graphic options on the front accomodating a full team name or single letter graphic. Back features tonal net graphic pattern and number. Swoosh design trademark at center front. Nike team sports jock tag at lower left hem. Body width: 20.5", Body length: 26.5" (size medium). Tall body length: +2.375" (all sizes).

FABRIC: 100% polyester.

509177 Shield Design \$65.00*

DRI-FIT



PINNACLE MESH 3.0 SHORT

See below*



SIZES: S, M, L, XL, 2XL
*15% upcharge for 3XL, LT, XLT, 2XLT, 3XLT

OFFER DATE: 09/01/12
END DATE: 01/01/15

Dri-FIT fabric pinnacle mesh short available in multi-team color combinations. Fully sublimated with unique Nike basketball tonal net design graphic on both side panels. Team logo or letter option on lower right hem of short and Swoosh design trademark on lower left hem. Hip width: 23" (size medium), Inseam length: 10.25" (all sizes). Tall inseam length: +1.25" (all sizes).

FABRIC: 100% polyester.

509178 Shield Design \$50.00*

DRI-FIT



DIGITAL UNIFORM OPTIONS



COLOR OPTIONS



LETTER FONT OPTIONS: Height will vary based on team name.

Full Block – 1 or 2 color – (Also available in Condensed version)

ABCDEFGHIJKLMNOPQRSTUVWXYZ

Athletic Shadow – 2 color only

ABCDEFGHIJKLMNOPQRSTUVWXYZ

Bureau – 1 or 2 color

ABCDEFGHIJKLMNOPQRSTUVWXYZ

Cougars – 1 or 2 color – (Not available in Arched or Vertical Arched)

ABCDEFGHIJKLMNOPQRSTUVWXYZ

Dade Bold – 1 or 2 color

ABCDEFGHIJKLMNOPQRSTUVWXYZ

FB Rush – 1 or 2 color

ABCDEFGHIJKLMNOPQRSTUVWXYZ

Glades Bold – 1 or 2 color

ABCDEFGHIJKLMNOPQRSTUVWXYZ

NUMBER FONT OPTIONS: Height will vary by style.

Full Block – 1 or 2 color

1234567890

Athletic Shadow – 2 color only

1234567890

Bureau – 1 or 2 color

1234567890

Cougars – 1 or 2 color – (Not available in Arched or Vertical Arched)

0123456789

Dade Bold – 1 or 2 color

1234567890

FB Rush – 1 or 2 color

1234567890

Glades Bold – 1 or 2 color

1234567890

Ithaca – 1 or 2 color

1234567890

Kansas – 1 or 2 color

1234567890

Michigan State – 1 or 2 color

1234567890

Ithaca – 1 or 2 color

ABCDEFGHIJKLMNOPQRSTUVWXYZ

Kansas – 1 or 2 color

ABCDEFGHIJKLMNOPQRSTUVWXYZ

Michigan State – 1 or 2 color

ABCDEFGHIJKLMNOPQRSTUVWXYZ

Tuscon Bold – 1 or 2 color – (Also available in Condensed version)

ABCDEFGHIJKLMNOPQRSTUVWXYZ

Boulder Bold – 1 or 2 color

ABCDEFGHIJKLMNOPQRSTUVWXYZ

Script – 1 or 2 color

ABCDEFGHIJKLMNOPQRSTUVWXYZ

Script Lower Case – 1 or 2 color

abcdefghijklmnopqrstuvwxyz

Tuscon Bold – 1 or 2 color

1234567890

Morgantown – 1 or 2 color

1234567890

Boulder Bold – 3 color only

1234567890

Blacksburg – 3 color only

1234567890

Gridiron – 3 color only

1234567890

Post embellishment is not recommended with digitally printed styles.

TEAR DROP JERSEY

See below*



SIZES: S, M, L, XL, 2XL
*15% upcharge for 3XL, LT, XLT, 2XLT, 3XLT

OFFER DATE: 09/01/11
END DATE: 01/01/14

Women's system of dress game jersey. A tailored fit with a great combination of flat-back mesh and piqué fabric help make this jersey lightweight and breathable for high performance play. Unique sublimated argyle side panel with pewter stripe is the same for all color options. V-neck design. Nike Team Sports jock tag at lower left hem. Body width: 19.25", Body length: 30.25" (size medium). Tall body length: +2.375" (all sizes).

FABRIC: Body: 100% polyester. Insets: 100% polyester.

436645	Blank	\$65.00*
359555	One-Color Screen Print	\$95.00*
359556	Two-Color Screen Print	\$105.00*
330089	One-Color Standard Twill	\$95.00*
330090	Two-Color Standard Twill	\$105.00*
409640	Three-Color Standard Twill	\$115.00*
409637	One-Color Lightweight Stretch Twill	\$105.00*
409638	Two-Color Lightweight Stretch Twill	\$115.00*
409639	Three-Color Lightweight Stretch Twill	\$125.00*
456533	Sublimated Standard Twill	\$105.00*
456047	Sublimated Lightweight Standard Twill	\$115.00*



TEAR DROP SHORT

See below*



SIZES: S, M, L, XL, 2XL
*15% upcharge for 3XL, LT, XLT, 2XLT, 3XLT

OFFER DATE: 09/01/11
END DATE: 01/01/14

Women's system of dress game short. Combination of piqué and flat back mesh fabrication provide the athlete with a breathable and comfortable fit. Engineered mesh on side panels with a unique argyle print. Print includes a pewter stripe that is the same for all color options. 2" exposed gripper elastic waistband with drawcord allow for adjustability. Embroidered Jumpman logo trademark at upper left hip. Hip width: 25", Inseam length: 10.25" (size medium). Tall inseam length: +1" (all sizes).

FABRIC: 100% polyester.

436646	Blank	\$65.00*
--------	-------	----------



ASCEND STATE GAME JERSEY

See below*

SIZES: S, M, L, XL, 2XL
*15% upcharge for 3XL, LT, XLT, 2XLT, 3XLT

OFFER DATE: 09/01/13
END DATE: 01/01/16

System of Dress game jersey. A tailored fit with a great combination of flat-back mesh and Dri-FIT piqué fabric help make this game jersey lightweight and breathable for high performance play on the court. V-neck design, contrast collar, contrast color around arm band and contrast detail down each side of this game jersey. Nike Team Sports jock tag at lower left hem. Body width: 19.25", Body length: 29.25" (size medium). Tall body length: +2.375" (all sizes).

FABRIC: Body: 100% polyester. Insets: 100% polyester.

553514	Blank	\$60.00*
359555	One-Color Screen Print	\$90.00*
359556	Two-Color Screen Print	\$100.00*
330089	One-Color Standard Twill	\$90.00*
330090	Two-Color Standard Twill	\$100.00*
409637	One-Color Lightweight Stretch Twill	\$100.00*
409638	Two-Color Lightweight Stretch Twill	110.00*
456047	Sublimated Lightweight Standard Twill	\$110.00*

NEW DRI-FIT



ASCEND STATE GAME SHORT

See below*

SIZES: S, M, L, XL, 2XL
*15% upcharge for 3XL, LT, XLT, 2XLT, 3XLT

OFFER DATE: 09/01/13
END DATE: 01/01/16

System of dress game short. Combination of flat-back mesh and Dri-FIT piqué fabric provides the athlete with a breathable and comfortable fit. Gripper elastic waistband with draw cord for adjust-ability. Contrast detail down side and around bottom hem of short. Embroidered Swoosh design trademark at upper left hip. Hip width: 25" (size medium), Inseam length: 10.25" (all sizes). Tall inseam length: +1.25" (all sizes).

FABRIC: Body: 100% polyester. Insets: 100% polyester.

553515	Blank	\$60.00*
359555	One-Color Screen Print	\$90.00*
359556	Two-Color Screen Print	\$100.00*
330089	One-Color Standard Twill	\$90.00*
330090	Two-Color Standard Twill	\$100.00*
409637	One-Color Lightweight Stretch Twill	\$100.00*
409638	Two-Color Lightweight Stretch Twill	110.00*
456047	Sublimated Lightweight Standard Twill	\$110.00*

NEW DRI-FIT



OHIO STATE GAME JERSEY

See below*

SIZES: S, M, L, XL, 2XL

OFFER DATE: 09/01/10

*15% upcharge for 3XL, LT, XLT, 2XLT, 3XLT

END DATE: 01/01/14

Dri-FIT lightweight flat-back mesh game Jersey with a v-neck design. Contrast insets under arms and on neck band help give this Jersey a fresh look on court. Tailored fit for optimal performance. Nike Team Sports jock tag at lower left hem. Body width: 19.25", Body length: 29.25" (size medium). Tall body length: +2.375" (all sizes).

FABRIC: Body: 100% polyester. Insets: 100% polyester.

392926	Blank	\$50.00*
359555	One-Color Screen Print	\$80.00*
359556	Two-Color Screen Print	\$90.00*
330089	One-Color Twill	\$80.00*
330090	Two-Color Twill	\$90.00*
409640	Three-Color Twill	\$100.00*
409637	One-Color Lightweight Stretch Twill	\$90.00*
409638	Two-Color Lightweight Stretch Twill	\$100.00*
409639	Three-Color Lightweight Stretch Twill	\$110.00*
456533	Sublimated Standard Twill	\$90.00*
456047	Sublimated Lightweight Standard Twill	\$100.00*

DRI-FIT



OHIO STATE GAME SHORT

See below*

SIZES: S, M, L, XL, 2XL

OFFER DATE: 09/01/10

*15% upcharge for 3XL, LT, XLT, 2XLT, 3XLT

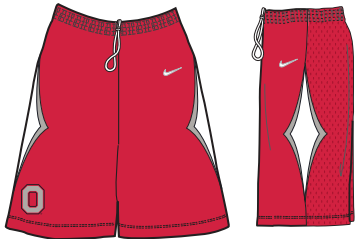
END DATE: 01/01/14

A Dri-FIT lightweight flat-back mesh game short that provides breathability for all types of ballers. 2" gripper elastic waistband with drawcord for adjustability. Unique diamond design shape side panels. Embroidered Swoosh design trademark at upper left hip. Hip width: 25" (size medium), Inseam length: 10.25" (all sizes). Tall inseam length: +1.25" (all sizes).

FABRIC: Body: 100% polyester. Insets: 100% polyester.

392927	Blank	\$50.00*
379375	One-Letter One-Color Screen Print	\$53.00*
379376	One-Letter Two-Color Screen Print	\$55.00*
379436	One-Letter One-Color Twill	\$55.00*
379374	One-Letter Two-Color Twill	\$57.00*
409641	One-Color One-Letter Lightweight Stretch Twill	\$56.00*
409642	Two-Color One-Letter Lightweight Stretch Twill	\$58.00*
456534	Sublimated Short 1 Letter Standard Twill	\$56.00*
456532	Sublimated Short 1 Letter Lightweight Stretch Twill	\$57.00*

DRI-FIT



SHOT CLOCK L/S SHIRT

See below*



SIZES: S, M, L, XL, 2XL
*15% upcharge for 3XL, 4XL, LT, XLT, 2XLT, 3XLT

OFFER DATE: 09/01/13
END DATE: 01/01/16

Dri-FIT piqué long-sleeve shirt. Contrast mesh inset under arms. Quarter-zip style for easy on, easy off. Ability for school representation on upper left chest. Embroidered Swoosh design trademark at upper right chest. Nike Team Sports jock tag at lower left hem. Body width: 20.75", Body length: 28.5" (size medium). Tall body length: +2.375" (all sizes). Tall sleeve length: +2.375" (all sizes).

FABRIC: 100% polyester.

553513	Blank	\$70.00*
Front Left Chest		
409643	One-Color Standard Twill	\$5.00*
409644	Two-Color Standard Twill	\$8.00*
531982	One-Color Lightweight Twill	\$8.00*
531983	Two-Color Lightweight Twill	\$12.00*
418812	1" Embroidery	\$10.00*
Back		
599333	One-Color Standard Twill	\$15.00*
599334	Two-Color Standard Twill	\$20.00*
599335	One-Color Lightweight Twill	\$20.00*
599336	Two-Color Lightweight Twill	\$25.00*

NEW DRI-FIT



SHOT CLOCK S/S SHIRT

See below*



SIZES: S, M, L, XL, 2XL
*15% upcharge for 3XL, 4XL, LT, XLT, 2XLT, 3XLT

OFFER DATE: 09/01/13
END DATE: 01/01/16

Dri-FIT piqué short-sleeve shirt. Contrast mesh inset under arms. Quarter-zip style for easy on easy off. Ability for school representation on upper left chest. Embroidered Swoosh design trademark at upper right chest. Nike Team Sports jock tag at lower left hem. Body width: 20.75", Body length: 28.5" (size medium). Tall body length: +2.375" (all sizes). Tall sleeve length: +1.25" (all sizes).

FABRIC: 100% polyester.

553512	Blank	\$65.00*
Front Left Chest		
409643	One-Color Standard Twill	\$5.00*
409644	Two-Color Standard Twill	\$8.00*
531982	One-Color Lightweight Twill	\$8.00*
531983	Two-Color Lightweight Twill	\$12.00*
418812	1" Embroidery	\$10.00*
Back		
599333	One-Color Standard Twill	\$15.00*
599334	Two-Color Standard Twill	\$20.00*
599335	One-Color Lightweight Twill	\$20.00*
599336	Two-Color Lightweight Twill	\$25.00*

NEW DRI-FIT



CUSTOM UNIFORM OPTIONS



COLOR OPTIONS



EMBELLISHMENT COLOR OPTIONS *Sublimated Lightweight Stretch Twill and Embroidery only.



LETTER FONT OPTIONS: Height will vary based on team name.

Full Block – 1 or 2 color – (Also available in Condensed version)

ABCDEFGHIJKLMNOPQRSTUVWXYZ

Athletic Shadow – 2 color only

ABCDEFGHIJKLMNOPQRSTUVWXYZ

Bureau – 1 or 2 color

ABCDEFGHIJKLMNOPQRSTUVWXYZ

Cougars – 1 or 2 color – (Not available in Arched or Vertical Arched)

ABCDEFGHIJKLMNOPQRSTUVWXYZ

Dade Bold – 1 or 2 color

ABCDEFGHIJKLMNOPQRSTUVWXYZ

FB Rush – 1 or 2 color

ABCDEFGHIJKLMNOPQRSTUVWXYZ

Glades Bold – 1 or 2 color

ABCDEFGHIJKLMNOPQRSTUVWXYZ

NUMBER FONT OPTIONS: Height will vary by style.

Full Block – 1 or 2 color

1234567890

Athletic Shadow – 2 color only

1234567890

Bureau – 1 or 2 color

1234567890

Cougars – 1 or 2 color – (Not available in Arched or Vertical Arched)

0123456789

Dade Bold – 1 or 2 color

1234567890

FB Rush – 1 or 2 color

1234567890

Glades Bold – 1 or 2 color

1234567890

Ithaca – 1 or 2 color

1234567890

Kansas – 1 or 2 color

1234567890

Michigan State – 1 or 2 color

1234567890

Ithaca – 1 or 2 color

ABCDEFGHIJKLMNOPQRSTUVWXYZ

Kansas – 1 or 2 color

ABCDEFGHIJKLMNOPQRSTUVWXYZ

Michigan State – 1 or 2 color

ABCDEFGHIJKLMNOPQRSTUVWXYZ

Tuscon Bold – 1 or 2 color – (Also available in Condensed version)

ABCDEFGHIJKLMNOPQRSTUVWXYZ

Boulder Bold – 1 or 2 color

ABCDEFGHIJKLMNOPQRSTUVWXYZ

Script – 1 or 2 color

ABCDEFGHIJKLMNOPQRSTUVWXYZ

Script Lower Case – 1 or 2 color

abcdefghijklmnopqrstuvwxyz

Tuscon Bold – 1 or 2 color

1234567890

Morgantown – 1 or 2 color

1234567890

Boulder Bold – 3 color only

1234567890

Blacksburg – 3 color only

1234567890

Gridiron – 3 color only

1234567890

EMBELLISHMENT OPTIONS

- One-Color Screen Print — \$30
- Two-Color Screen Print — \$40
- One-Color Standard Twill — \$30
- Two-Color Standard Twill — \$40
- One-Color Lightweight Stretch Twill — \$40
- Two-Color Lightweight Stretch Twill — \$50
- Sublimated Lightweight Stretch Twill — \$50

LADY DURHAM GAME JERSEY

SIZES: S, M, L, XL, 2XL
*25% upcharge for 3XL
Clean finished V-neck with mitered rib insert. Three-piece side insert with outside inserts forming hemmed armholes. Options: +2" and +4" additional length.
FABRIC: White: 100% polyester. Colors: 100% nylon.

13678X	Flat-back mesh
--------	----------------

LADY DURHAM GAME SHORT

SIZES: S, M, L, XL, 2XL
*25% upcharge for 3XL
Four-needle 2" exposed gripper elastic waistband with drawcord. Two-color side panel inserts. 8" inseam. Options: +2" and +4" additional length.
FABRIC: White: 100% polyester. Colors: 100% nylon.

13693X	Flat-back mesh
288425	Two-ply flat-back mesh



350814 UCONN GAME JERSEY

SIZES: S, M, L, XL, 2XL
*15% upcharge for 3XL
1" two contrasting color self-fabric neck with facing and clean finished armhole. Two contrasting color side inserts with 0.375" overlay sewn at back of inserts. Options: +2" and +4" additional length. Body width: 19.25", Body length: 29.25" (size medium). NFHS approved.
FABRIC: White: 100% polyester. Colors: 100% nylon.

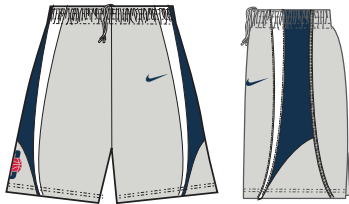
Flat-back mesh



UConn GAME SHORT

SIZES: S, M, L, XL, 2XL
*15% upcharge for 3XL
Four-needle 2" exposed gripper elastic waistband with drawcord. Two contrasting side inserts with 0.375" overlay sewn at back of inserts. Options: +2" and +4" additional length. Hip width: 25" (size medium), Inseam length: 10.25" (all sizes). NFHS approved.
FABRIC: White: 100% polyester. Colors: 100% nylon.

- | | |
|--------|------------------------|
| 350816 | Flat-back mesh |
| 350817 | Two-ply flat-back mesh |



392935 | COLORADO GAME JERSEY

SIZES: S, M, L, XL, 2XL
*15% upcharge for 3XL
1" contrasting color self-fabric v-neck game jersey. Flat-back mesh helps keeps you cool in the heat of the game. Contrast side inserts under arms. Nike Team Sports jock tag at lower left hem. Options: +2" and +4" additional length. Body width: 19.25", Body length: 29.25" (size medium).
FABRIC: White: 100% polyester. Colors: 100% nylon.



392936 | COLORADO GAME SHORT

SIZES: S, M, L, XL, 2XL
*15% upcharge for 3XL
Nylon mesh fabrication with a four-needle 2" exposed gripper elastic waistband with drawcord for adjustability. Contrast piqué inserts give this short a unique design look. Embroidered Swoosh design trademark at left thigh. Options: +2" and +4" additional length. Hip width: 25" (size medium), Inseam length: 10.25" (all sizes).
FABRIC: White: 100% polyester. Colors: 100% nylon.



454948 | GEORGIA GAME JERSEY

SIZES: S, M, L, XL, 2XL
*15% upcharge for 3XL
Fully sublimated v-neck game jersey. 1" neck band with ability to contrast to team color. Flat back mesh makes the jersey lightweight. Aero mesh back panel keeps the jersey breathable. Ability for additional team color customization under the arms. Nike Team Sports jock tag at lower left hem. Options: +2" and +4" additional length. Body width: 19.25", Body length: 29.25" (size medium).
FABRIC: Flat-Back Mesh: 100% polyester. Mesh: 100% polyester.



454949 | GEORGIA GAME SHORT

SIZES: S, M, L, XL, 2XL
*15% upcharge for 3XL
Fully sublimated woven game short. Perforated lower side panel help keep the athlete cool. 2" exposed griper elastic waistband with drawcord for adjustability. Ability for team color customization on side panels. Sublimated Swoosh design trademark at left hip. Options: +2" and +4" additional length. Hip width: 23.25" (size medium), Inseam length: 10.25" (all sizes).
FABRIC: 2-Way Stretch Plain Twill: 100% polyester.



CUSTOM ELITE UNIFORM OPTIONS



COLOR OPTIONS



 Indicates color of Swoosh patch on fabric color. No options available.

FABRIC OPTIONS



NECK/CUFF TRIM OPTIONS

*5/8" trim available on 11, 22, 22NE, 23E and 33E patterns only.





599527 | NIKE HYPERDUNK 2013 TB \$140.00

SIZES: 5-14, 15, 16 **OFFER DATE:** 7/1
 Revolutionary.
UPPER: Superior.
MIDSOLE: Lightweight.
OUTSOLE: Innovative.

001 Black/Metallic Silver-White	100 White/Black-Metallic Silver
300 Gorge Green/Metallic Silver-Electric Green	400 Midnight Navy/Metallic Silver-Photo Blue
401 Game Royal/Metallic Silver-Blue Hero	500 Court Purple/Metallic Silver
600 Team Red/Metallic Silver-University Red	601 Gym Red/Metallic Silver-Bright Crimson

NEW



599515 | HYPER QUICKNESS TB \$105.00

SIZES: 5-14, 15, 16 **OFFER DATE:** 9/1
 The hyperquickness is for the player looking for lightweight performance with durability and responsiveness as key benefits.
UPPER: Hyperfuse upper for lightweight durability and breathability. Midfoot harness for excellent lockdown.
MIDSOLE: Phylon midsole with high wrapping mid-foot rubber for lightweight durability. Forefoot Zoom Air unit for responsiveness.
OUTSOLE: Solid rubber outsole with modified herringbone pattern for excellent durability.

001 Black/Metallic Silver-White	100 White/Black-Metallic Silver
300 Gorge Green/Metallic Silver-White	401 Game Royal/Metallic Silver-White
402 Midnight Navy/Metallic Silver-White	500 Court Purple/Metallic Silver-White
600 Team Red/Metallic Silver-White	601 Gym Red Red/Metallic Silver-White
800 Bright Orange/Metallic Silver-Total Orange	

NEW Zoom





ELITE CHAMPIONSHIP AIRLOCK 8P

SIZES: 6, 7 **OFFER DATE:** C/O

Airlock Technology/ Holds exact air pressure over 85x longer than closest competition • Fully Adjustable / Adjust the air pressure exactly where you want it • Precision Feel / Consistent handle with precise, steady air pressure week after week • Game-Dry Composite Leather / Micro-perforated material helps keep sweat from collecting on the surface of the ball for a sure handle and ultra-soft touch all game long • Soft-touch woven microfiber backing/ Delivers a soft, indoor feel with deep-pebble grip • Wide channels/ Shooter-preferred wide channels help your fingers find a groove • Nike Elite basketballs preferred by over 250 major college programs • NFHS approved for high school play • Indoor use • NFHS approved.

BB0495-801	Amber/(Black-Platinum)	Size 7	\$70.00
BB0496-801	Amber/(Black-Platinum)	Size 6	\$70.00



ELITE TOURNAMENT 8-PANEL

SIZES: 7 **OFFER DATE:** C/O

Confident grip and feel / New deep-pebbled composite leather with Microfiber backing for soft feel and solid handle • Quicker shooting alignment / Wrap-around panels remove channel intersections for a quicker alignment on each shot • Better ball control / Wide channels help fingers find a groove for precise control • NFHS approved.

BB0401-801	Amber/(Black-Platinum)	Size 7	\$45.00
------------	------------------------	--------	---------



ELITE COMPETITION 8-PANEL

SIZES: 6, 7 **OFFER DATE:** C/O

Soft-touch, superb grip / Game-Dry composite leather is micro-perforated to keep the ball grippy and dry in your hand • Quicker shooting alignment / Wrap-around panels remove channel intersections for a quicker alignment on each shot • Better ball control / Wide channels help fingers find a groove for precise control • NFHS approved

BB0446-801	Amber/(Black-Platinum)	Size 7	\$32.00
BB0445-801	Amber/(Black-Platinum)	Size 6	\$32.00



GAME TACK

SIZES: 5, 6, 7 **OFFER DATE:** C/O

77% Rubber/12% Nylon/11% Synthetic Leather - Non-Woven.

BB0451-801	Amber/(Black-Platinum)	Size 7	\$20.00
BB0452-801	Amber/(Black-Platinum)	Size 6	\$20.00
BB0453-801	Amber/(Black-Platinum)	Size 5	\$20.00



ELITE CHAMPIONSHIP AUTOGRAPH 8-PANEL

SIZES: 7 **OFFER DATE:** 07/01/13

Smooth, white synthetic leather panels / maximum autograph space.

BB0405-801	Amber/White/(Black-Platinum)	Size 7	\$25.00
------------	------------------------------	--------	---------



BA4724 | NIKE HOOPS ELITE TEAM BACKPACK \$70.00

SIZES: MISC **OFFER DATE:** 07/01/13

Water resistant tarpaulin • Nike Max Air shoulder straps • Dual zippered main compartment • Padded back panel • Laptop sleeve fits 15" system

001 Black/Black/(White)	401 Midnight Navy/Black/(White)
411 Game Royal/Black/(White)	651 University Red/Black/(White)





SX4801 NIKE HYPERELITE BASKETBALL CREW \$18.00

SIZES: S, M, L, XL **OFFER DATE:** 09/01/13
Sold in pre-packs of six.

Strategic, multi-density cushioning absorbs the impact where it counts • Dri-FIT fabric / wicks away moisture to help keep feet dry and cool • Midfoot compression fit / secure, stable design keeps socks and cushioning in place • Anatomical left and right / superior fit and cushioning • Reinforced heel and toe for enhanced durability

070	Black/White/(White)	101	White/Black/(Black)
143	White/Game Royal/(Game Royal)	144	White/Midnight Navy/(Midnight Navy)
160	White/Varsity Red/(Varsity Red)	393	Gorge Green/Gorge Green/(White)
424	Concord/Concord/(White)	440	Midnight Navy/Midnight Navy/(White)
441	Game Royal/White/(White)	661	Varsity Red/Varsity Red/(White)
881	Team Orange/Team Orange/(White)		

NEW DRI-FIT



530977 AIR JORDAN DRI-FIT CREW \$16.00

SIZES: S, M, L, XL **OFFER DATE:** 09/01/13
Sold in pre-packs of six.

Engineered for performance athletes this Dri-FIT sock features articulated cushioning for shock absorption on key zones, extended rib atop forefoot for secure lockdown, l/r anatomical construction, re-enforced spandex rib for optimal fit. Jumpman design trademark at center back.

010	Black/Gym Red/(Gym Red)	012	Black/Matte Silver/(Matte Silver)
013	Black/Gorge Green/(Gorge Green)	021	Dark Grey/White/(White)
024	Black/Game Royal/(Game Royal)	100	White/Black/(Black)
474	Game Royal/White/(White)		

NEW DRI-FIT



NIKE ELITE BASKETBALL SOCK \$14.00

SIZES: MISC **OFFER DATE:** C/O

Midfoot Compression Fit-Secure stable design helps keep socks and cushioning in place • Footstrike Cushioning (patent pending) / New, clearly defined pattern is even more closely aligned to pressure patterns on a runners feet • Dri-FIT fabric / Wicks away moisture to help keep feet dry and cool • Anatomical left and right / Superior fit and cushioning

FABRIC: 62% polyester/21% nylon/15% cotton/2% spandex.

SIZE: XL sock = M 12-15 shoe size; L sock = M 8-12 shoe size, W 10-13 shoe size; M sock = M 6-8 shoe size, W 6-10 shoe size; S sock = 3Y-5Y shoe size.

SX3694-002	Black/Varsity Red/(Varsity Red)	X-LARGE (M12-15)	\$14.00
SX3694-004	Black/Game Royal/(Game Royal) NEW	X-LARGE (M12-15)	\$14.00
SX3694-007	Black/White/(White)	X-LARGE (M12-15)	\$14.00
SX3694-107	White/Black/(Black)	X-LARGE (M12-15)	\$14.00
SX3694-126	White/University Blue/(University Blue)	X-LARGE (M12-15)	\$14.00
SX3694-143	White/Game Royal/(Game Royal)	X-LARGE (M12-15)	\$14.00
SX3694-345	Gorge Green/White/(White)	X-LARGE (M12-15)	\$14.00
SX3694-401	Midnight Navy/White/(White)	X-LARGE (M12-15)	\$14.00
SX3694-441	Game Royal/White/(White)	X-LARGE (M12-15)	\$14.00
SX3694-601	Varsity Red/White/(White)	X-LARGE (M12-15)	\$14.00
SX3693-002	Black/Varsity Red/(Varsity Red)	LARGE (M8-12, W10-13)	\$14.00
SX3693-004	Black/Game Royal/(Game Royal) NEW	LARGE (M8-12, W10-13)	\$14.00
SX3693-007	Black/White/(White)	LARGE (M8-12, W10-13)	\$14.00
SX3693-102	White/Midnight Navy/(Midnight Navy)	LARGE (M8-12, W10-13)	\$14.00
SX3693-107	White/Black/(Black)	LARGE (M8-12, W10-13)	\$14.00
SX3693-126	White/University Blue/(University Blue)	LARGE (M8-12, W10-13)	\$14.00
SX3693-143	White/Game Royal/(Game Royal)	LARGE (M8-12, W10-13)	\$14.00
SX3693-160	White/Varsity Red/(Varsity Red)	LARGE (M8-12, W10-13)	\$14.00
SX3693-345	Gorge Green/White/(White)	LARGE (M8-12, W10-13)	\$14.00
SX3693-401	Midnight Navy/White/(White)	LARGE (M8-12, W10-13)	\$14.00
SX3693-441	Game Royal/White/(White)	LARGE (M8-12, W10-13)	\$14.00
SX3693-601	Varsity Red/White/(White)	LARGE (M8-12, W10-13)	\$14.00
SX3693-623	Deep Maroon/Deep Maroon/(White) NEW	LARGE (M8-12, W10-13)	\$14.00
SX3693-810	Team Orange/White/(White) NEW	LARGE (M8-12, W10-13)	\$14.00
SX3692-002	Black/Varsity Red/(Varsity Red)	MEDIUM (M6-8, W6-10)	\$14.00
SX3692-004	Black/Game Royal/(Game Royal) NEW	MEDIUM (M6-8, W6-10)	\$14.00
SX3692-007	Black/White/(White)	MEDIUM (M6-8, W6-10)	\$14.00
SX3692-102	White/Midnight Navy/(Midnight Navy)	MEDIUM (M6-8, W6-10)	\$14.00
SX3692-107	White/Black/(Black)	MEDIUM (M6-8, W6-10)	\$14.00
SX3692-126	White/University Blue/(University Blue)	MEDIUM (M6-8, W6-10)	\$14.00
SX3692-160	White/Varsity Red/(Varsity Red)	MEDIUM (M6-8, W6-10)	\$14.00
SX3692-345	Gorge Green/White/(White)	MEDIUM (M6-8, W6-10)	\$14.00
SX3692-401	Midnight Navy/White/(White)	MEDIUM (M6-8, W6-10)	\$14.00
SX3692-441	Game Royal/White/(White)	MEDIUM (M6-8, W6-10)	\$14.00
SX3692-601	Varsity Red/White/(White)	MEDIUM (M6-8, W6-10)	\$14.00
SX3692-623	Deep Maroon/Deep Maroon/(White) NEW	MEDIUM (M6-8, W6-10)	\$14.00
SX3692-810	Team Orange/White/(White) NEW	MEDIUM (M6-8, W6-10)	\$14.00
SX4586-007	Black/White/(White) NEW	SMALL (3Y-5Y)	\$14.00
SX4586-107	White/Black/(Black) NEW	SMALL (3Y-5Y)	\$14.00

DRI-FIT



NIKE ELITE BASKETBALL KAY YOW CREW \$14.00

Orders accepted in increments of 6 PPK units only

SIZES: MISC **OFFER DATE:** C/O

Strategic multi-density cushioning softens the impact where it counts • Dri-FIT fabric pulls away sweat to help keep you cool and comfortable • Supportive fit with arch compression • Left/Right specific design for a better fit • Reinforced heel and toe for enhanced durability

SIZE: L sock = M 8-12 shoe size, W 10-13 shoe size; M sock = M 6-8 shoe size, W 6-10 shoe size.

SX4513-066	Black/Pinkfire II/(Pinkfire II) NEW	LARGE (M8-12, W10-13)	\$14.00
SX4513-166	White/Pinkfire II/(Pinkfire II)	LARGE (M8-12, W10-13)	\$14.00
SX4513-611	Pinkfire II/White/(White)	LARGE (M8-12, W10-13)	\$14.00
SX4512-066	Black/Pinkfire II/(Pinkfire II) NEW	MEDIUM (M6-8, W6-10)	\$14.00
SX4512-166	White/Pinkfire II/(Pinkfire II)	MEDIUM (M6-8, W6-10)	\$14.00
SX4512-611	Pinkfire II/White/(White)	MEDIUM (M6-8, W6-10)	\$14.00

DRI-FIT

ENGINEERED TO THE EXACT SPECIFICATIONS OF CHAMPIONSHIP ATHLETES



NIKETEAM.COM

